

FIG. 78 MODEL 2700 COMPLETE PHONOGRAPH FUNCTIONAL SCHEMATIC

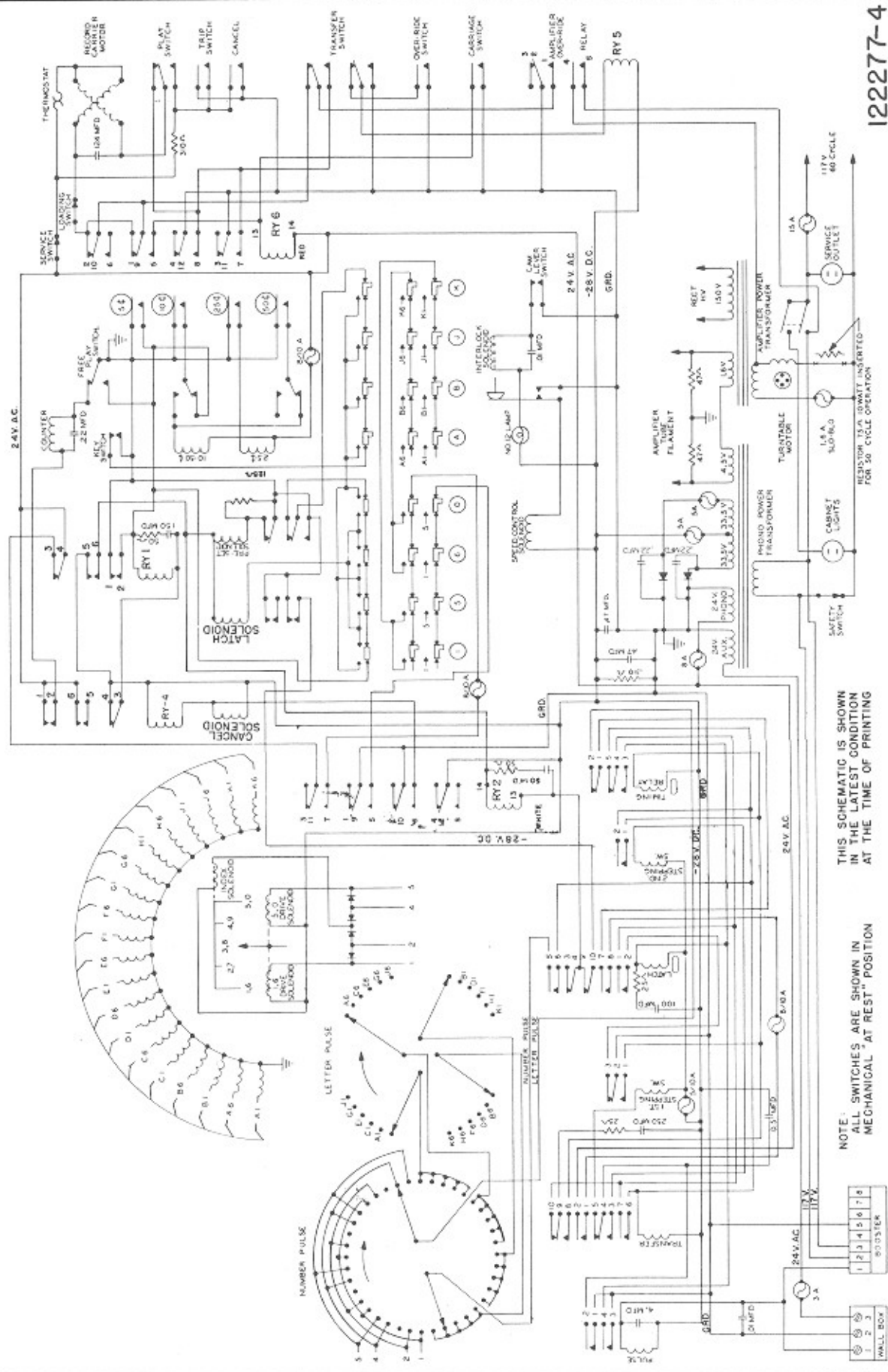
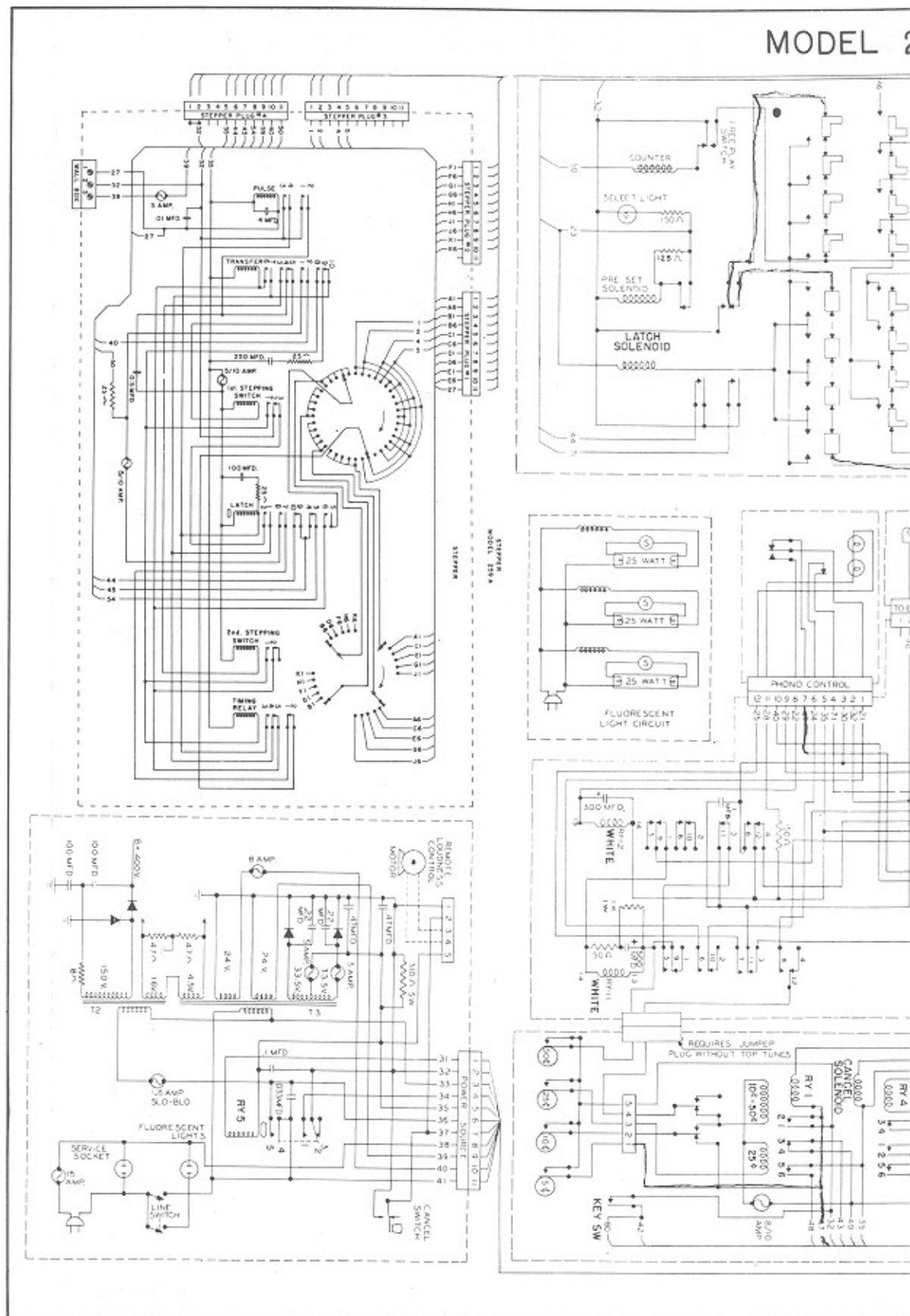


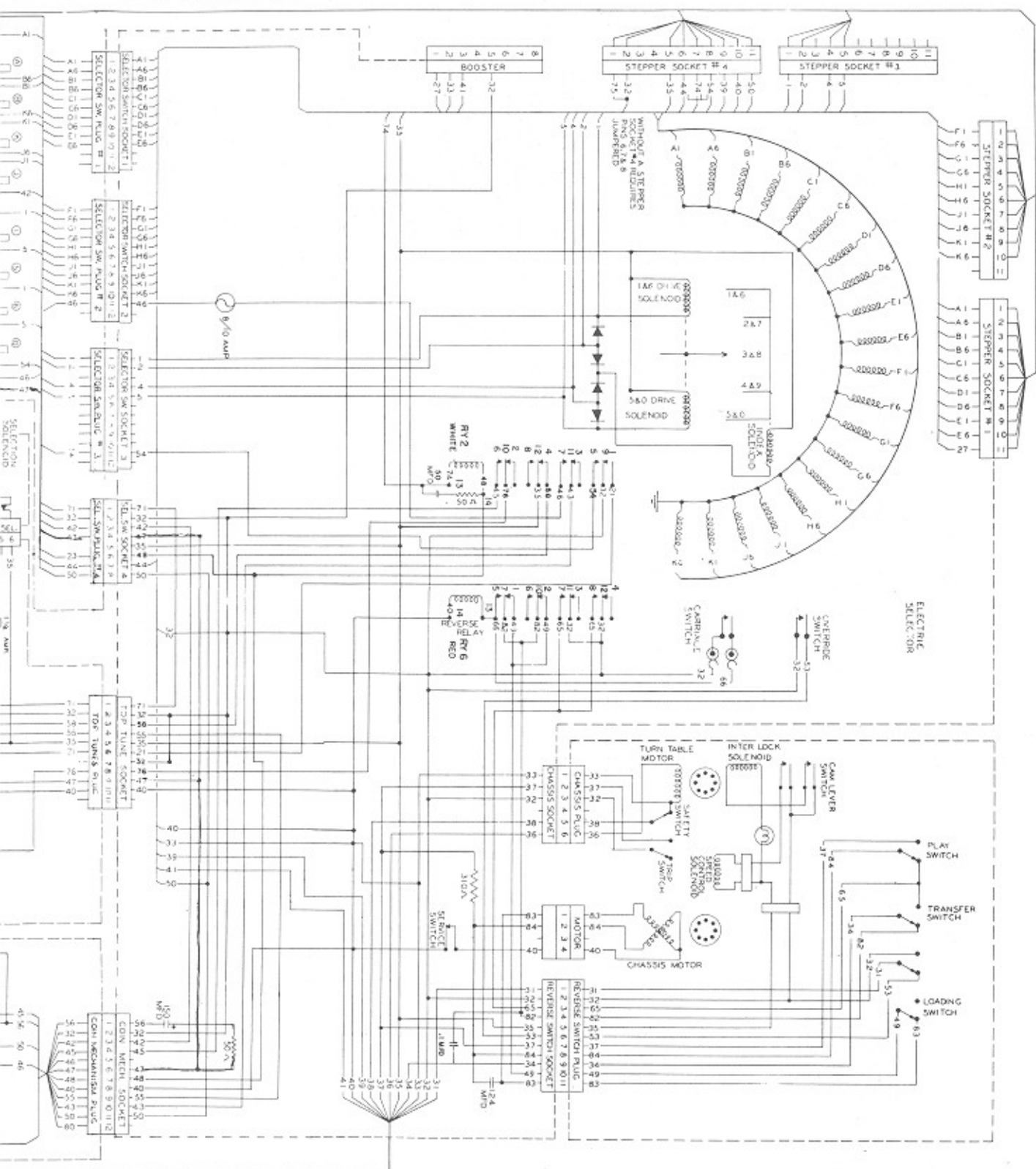
FIG. 79 MODEL 2710 COMPLETE PHONOGRAPH FUNCTIONAL SCHEMATIC

## MODEL 2



FIG

# 2710 WIRING DIAGRAM



THIS SCHEMATIC IS SHOWN IN THE LATEST  
CONDITION AT THE TIME OF PRINTING.

122274-4

# MODEL 2700 WIRING

WITHOUT  
STEPPER, NO.  
4 SOCKET  
REQUIRES  
JUMPER PINS  
6, 7, 9, 8

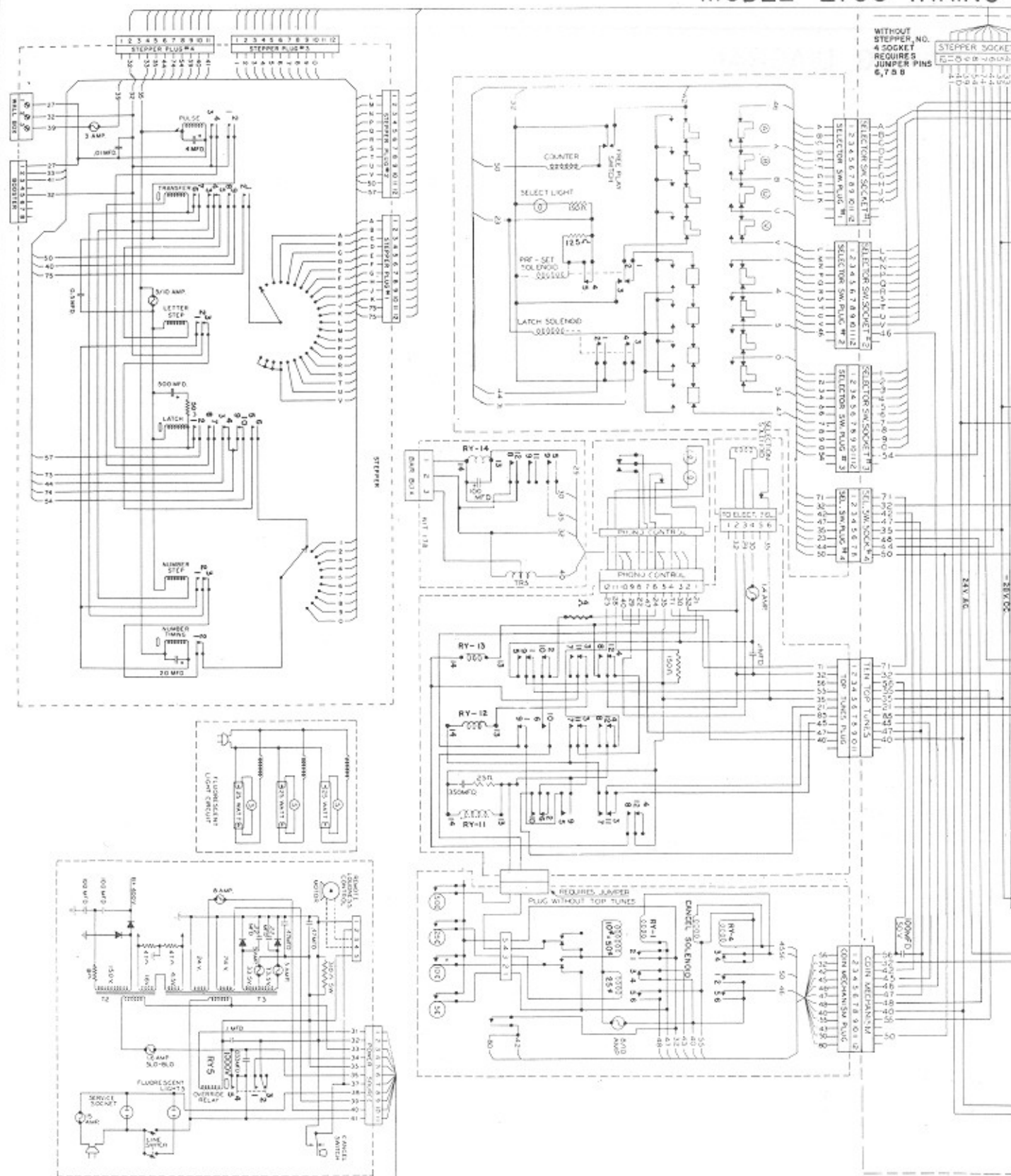


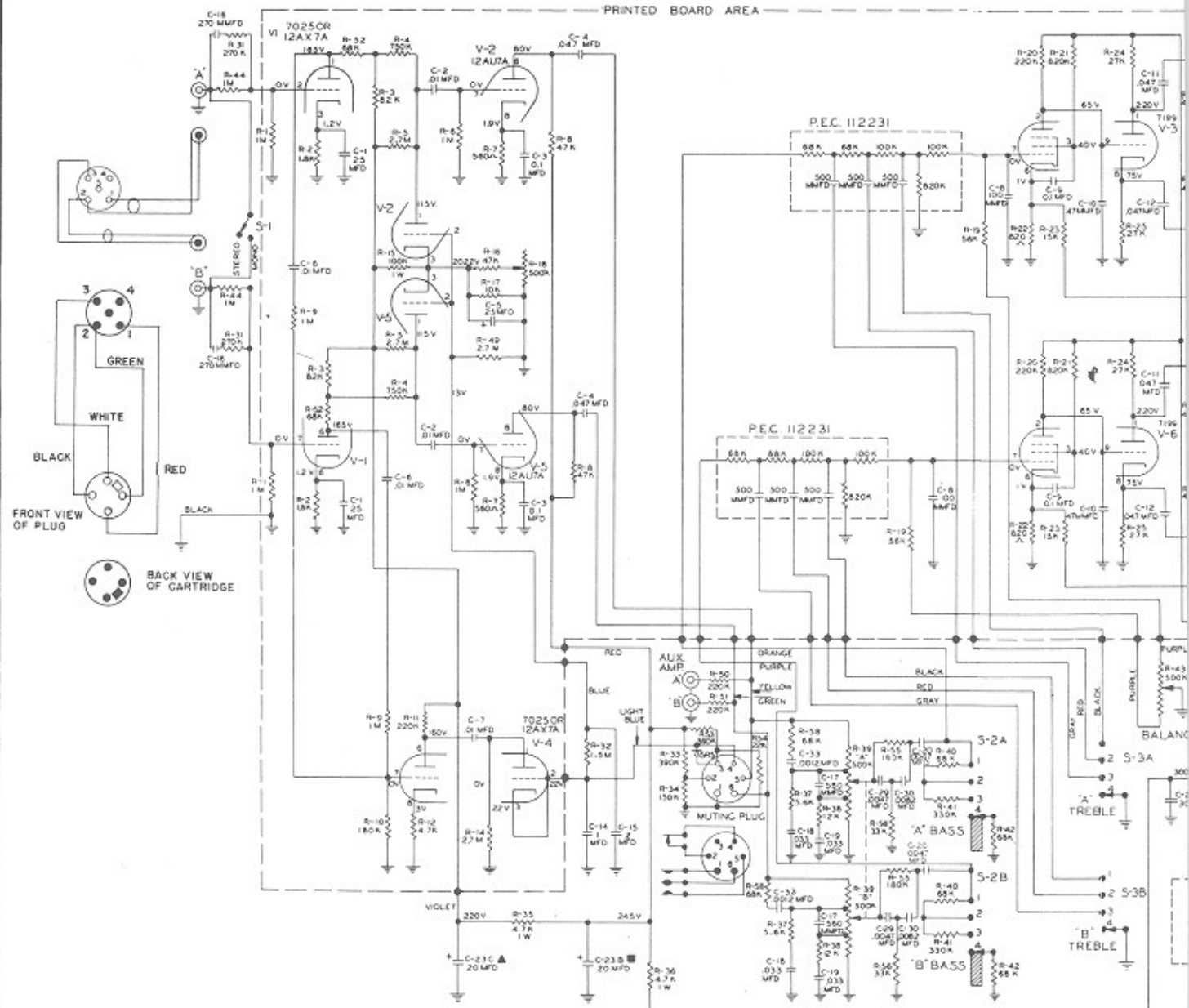
FIG. 80 MODEL 2700





# SOUND SYSTEM SCHEMATIC - I

PRINTED BOARD AREA



A.C. SIGNAL CHART  
USE BALLANTINE AC-VTVM OR HEATHKIT VOLTMETER AV-2  
APPLY 10 MILLIVOLT AT 1000 CPS SIGNAL TO INPUT JACKS A & B  
LOUDNESS CONTROL FULL CLOCKWISE, BASS & TREBLE CONTROLS TO "4"  
BALANCE CONTROL SET IN MIDDLE. USE 5A 20W RESISTOR AS  
OUTPUT LOAD FOR EACH CHANNEL.

TUBE	FUNCTION	1	2	3	4	5	6	7	8	9
V1	7025OR 12AX7A	V.A.	330V	45MV	0MV	3.05V	3.05V	330MV	45MV	0MV
V4	7025OR 12AX7A	V.A-RECT	950MV	0	0MV	3.05V	3.05V	950MV	40MV	30MV
V2, V5	12AU6A	V.A.	14MV	0	0	3.05V	3.05V	160MV	4MV	4MV
V3, V6	7199	V.A. - β	750MV	820MV	35MV	3.05V	3.05V	35MV	28MV	750MV
V7, V8	6973	POWER AMP	0	N.C.	750MV	3.05V	3.05V	750MV	20MV	0
V9, V10										

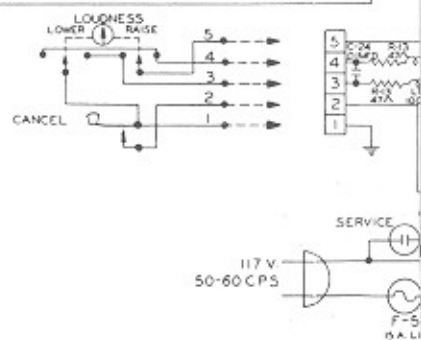
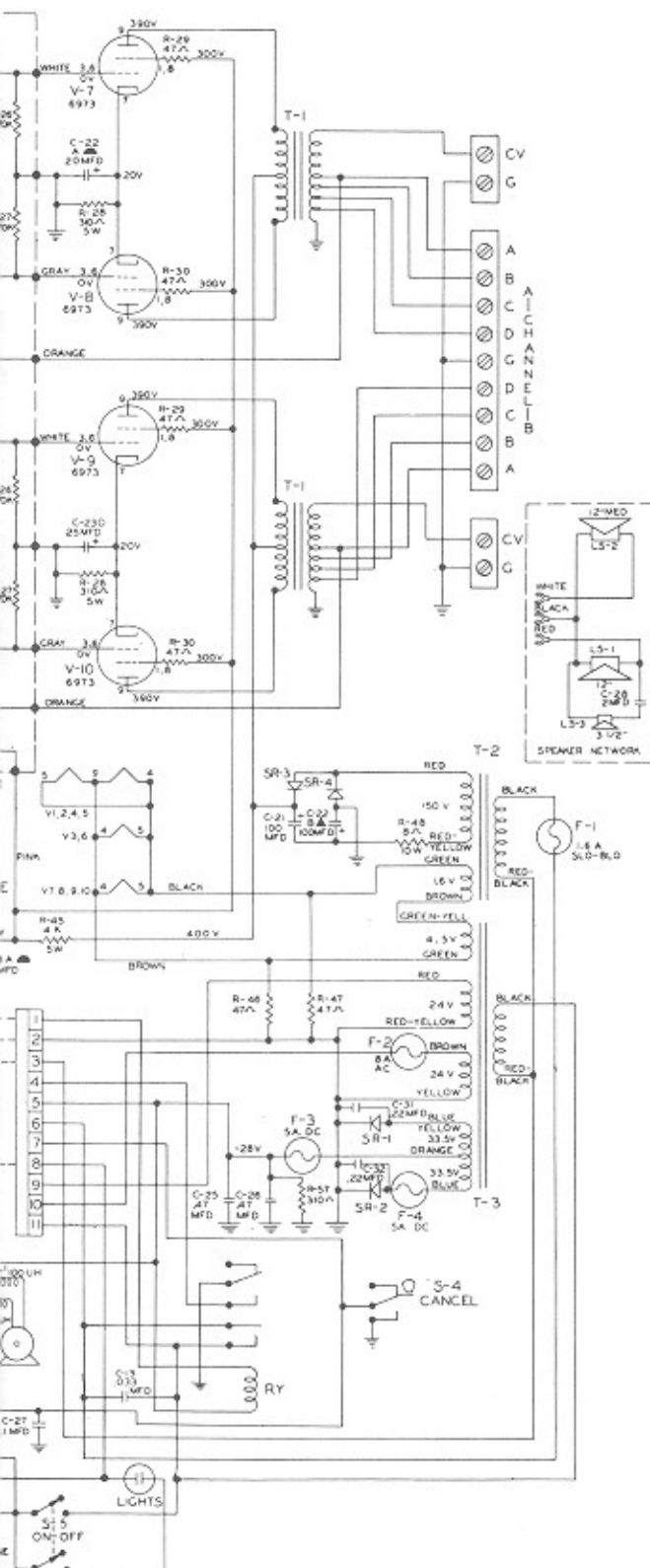


FIG. 82 SOUND SYSTEM SCHE



## MODEL 544 AMPLIFIER



ITEM	PART NO.	VALUE	REMARKS
R-1	72264-32	1 MEG	1/2 W ±10%
R-2	72198-32	1.8K	1/2 W ±10%
R-3	72238-31	82K	1/2 W ±5%
R-4	72238-31	750K	1/2 W ±5%
R-5	72238-31	2.1 MEG	1/2 W ±5%
R-6	72264-32	1 MEG	1/2 W ±10%
R-7	72188-32	560K	1/2 W ±10%
R-8	72232-32	47K	1/2 W ±10%
R-9	72264-32	1 MEG	1/2 W ±10%
R-10	72246-32	180K	1/2 W ±10%
R-11	72246-32	220K	1/2 W ±10%
R-12	72208-32	4.7K	1/2 W ±10%
R-13	72160-32	47K	1/2 W ±10%
R-14	72274-32	2.7 MEG	1/2 W ±10%
R-15	72238-31	100K	1 W ±5%
R-16	72232-32	47K	1/2 W ±10%
R-17	72218-31	10K	1/2 W ±5%
R-18	44480	500K	BIAS CONTROL
R-19	72214-32	56K	1/2 W ±10%
R-20	72248-32	220K	1/2 W ±10%
R-21	72262-32	620K	1/2 W ±10%
R-22	72190-32	620K	1/2 W ±10%
R-23	72220-32	15K	1/2 W ±10%
R-24	72228-32	27K	1/2 W ±10%
R-25	72228-32	27K	1/2 W ±10%
R-26	72256-32	470K	1/2 W ±10%
R-27	72256-32	470K	1/2 W ±10%
R-28	72299-2	310K	5 WATT
R-29	72160-32	47K	1/2 W ±10%
R-30	72160-32	47K	1/2 W ±10%
R-31	72250-32	270K	1/2 W ±10%
R-32	72258-31	1.5 MEG	1/2 W ±5%
R-33	72254-32	390K	1/2 W ±10%
R-34	72244-32	150K	1/2 W ±10%
R-35	72232-32	4.7K	1 W ±10%
R-36	72252-32	4.7K	1 W ±10%
R-37	72210-32	5.6K	1/2 W ±10%
R-38	72218-32	12K	1/2 W ±10%
R-39	72089	500K	DUAL GROUND
R-40	72238-32	68K	1/2 W ±10%
R-41	72252-32	110K	1/2 W ±10%
R-42	72238-32	68K	1/2 W ±10%
R-43	14453	500K	BALANCE
R-44	72284-32	1 MEG	1/2 W ±10%
R-45	70808-2	4K	5 WATT
R-46	72160-32	47K	1/2 W ±10%
R-47	72160-32	47K	1/2 W ±10%
R-48	72172-2	87K	10 WATT
R-49	72214-32	2.7 MEG	1/2 W ±5%
R-50	72248-32	220K	1/2 W ±10%
R-51	72248-32	220K	1/2 W ±10%
R-52	72236-31	68K	1/2 W ±5%
R-53	72258-32	390K	1/2 W ±10%
R-54	72284-32	22K	1/2 W ±10%
R-55	72248-32	180K	1/2 W ±10%
R-56	72238-32	33K	1/2 W ±10%
R-57	72190-2	310K	5 WATT
R-58	72238-32	68K	1/2 W ±10%
C-1	71842-21	25 MFD	25V ELECT
C-2	71851-11	21 MFD	CERAMIC
C-3	7432-14	0.1 MFD	400V
C-4	74317-14	0.47 MFD	400V
C-5	71842-21	25 MFD	25V ELECT
C-6	71851-11	21 MFD	CERAMIC
C-7	7432-14	0.1 MFD	400V
C-8	74317-14	0.47 MFD	400V
C-9	7432-14	0.1 MFD	400V
C-10	74317-14	0.47 MFD	400V
C-11	7432-14	0.1 MFD	400V
C-12	74317-14	0.47 MFD	400V
C-13	7432-14	0.1 MFD	400V
C-14	74317-14	0.47 MFD	400V
C-15	73576	2 MFD	50V
C-16	71818-24	270 MFD	CERAMIC
C-17	71828-44	540 MFD	CERAMIC
C-18	74315-11	0.33 MFD	100V
C-19	74315-11	0.33 MFD	100V
C-20	71849-17	0.047 MFD	CERAMIC
C-21	71595	100 MFD	250V ELECT
C-22	71594	20 MFD	400V ELECT
C-23	71594	20 MFD	400V ELECT
C-24	71594	20 MFD	400V ELECT
C-25	71594	20 MFD	400V ELECT
C-26	71594	20 MFD	400V ELECT
C-27	71594	20 MFD	400V ELECT
C-28	71594	20 MFD	400V ELECT
C-29	71594	20 MFD	400V ELECT
C-30	71594	20 MFD	400V ELECT
C-31	71594	20 MFD	400V ELECT
C-32	71594	20 MFD	400V ELECT
C-33	71594	20 MFD	400V ELECT
S-1	71874	5 P S T	MONO-STEREO
S-2	71874	4 POS. SHORTING	BASS SW
S-3	71874	4 POS. SHORTING	TREBLE SW
S-4	71874	5 P S T	CANCEL
S-5	71874	5 P S T	POWER
T-1	120891	AUDIO OUTPUT	
T-2	116645	POWER	
T-3	120889	JUNCTION	
F-1	71591-15	1.6 AMP	SLO-BLO
F-2	71590-31	8 AMP	
F-3	71590-27	5 AMP	
F-4	71590-27	5 AMP	
F-5	71590-48	15 AMP	
SR-1	71888-12	SILICON	RCA
SR-2	71888-12	SILICON	RCA
SR-3	71888-12	SILICON	RCA
SR-4	71888-12	SILICON	RCA
SR-5	71888-12	SILICON	RCA
SR-6	71888-12	SILICON	RCA
SR-7	71888-12	SILICON	RCA
SR-8	71888-12	SILICON	RCA
SR-9	71888-12	SILICON	RCA
SR-10	71888-12	SILICON	RCA
SR-11	71888-12	SILICON	RCA
SR-12	71888-12	SILICON	RCA
SR-13	71888-12	SILICON	RCA
SR-14	71888-12	SILICON	RCA
SR-15	71888-12	SILICON	RCA
SR-16	71888-12	SILICON	RCA
SR-17	71888-12	SILICON	RCA
SR-18	71888-12	SILICON	RCA
SR-19	71888-12	SILICON	RCA
SR-20	71888-12	SILICON	RCA
SR-21	71888-12	SILICON	RCA
SR-22	71888-12	SILICON	RCA
SR-23	71888-12	SILICON	RCA
SR-24	71888-12	SILICON	RCA
SR-25	71888-12	SILICON	RCA
SR-26	71888-12	SILICON	RCA
SR-27	71888-12	SILICON	RCA
SR-28	71888-12	SILICON	RCA
SR-29	71888-12	SILICON	RCA
SR-30	71888-12	SILICON	RCA
SR-31	71888-12	SILICON	RCA
SR-32	71888-12	SILICON	RCA
SR-33	71888-12	SILICON	RCA
SR-34	71888-12	SILICON	RCA
SR-35	71888-12	SILICON	RCA
SR-36	71888-12	SILICON	RCA
SR-37	71888-12	SILICON	RCA
SR-38	71888-12	SILICON	RCA
SR-39	71888-12	SILICON	RCA
SR-40	71888-12	SILICON	RCA
SR-41	71888-12	SILICON	RCA
SR-42	71888-12	SILICON	RCA
SR-43	71888-12	SILICON	RCA
SR-44	71888-12	SILICON	RCA
SR-45	71888-12	SILICON	RCA
SR-46	71888-12	SILICON	RCA
SR-47	71888-12	SILICON	RCA
SR-48	71888-12	SILICON	RCA
SR-49	71888-12	SILICON	RCA
SR-50	71888-12	SILICON	RCA
SR-51	71888-12	SILICON	RCA
SR-52	71888-12	SILICON	RCA
SR-53	71888-12	SILICON	RCA
SR-54	71888-12	SILICON	RCA
SR-55	71888-12	SILICON	RCA
SR-56	71888-12	SILICON	RCA
SR-57	71888-12	SILICON	RCA
SR-58	71888-12	SILICON	RCA
SR-59	71888-12	SILICON	RCA
SR-60	71888-12	SILICON	RCA
SR-61	71888-12	SILICON	RCA
SR-62	71888-12	SILICON	RCA
SR-63	71888-12	SILICON	RCA
SR-64	71888-12	SILICON	RCA
SR-65	71888-12	SILICON	RCA
SR-66	71888-12	SILICON	RCA
SR-67	71888-12	SILICON	RCA
SR-68	71888-12	SILICON	RCA
SR-69	71888-12	SILICON	RCA
SR-70	71888-12	SILICON	RCA
SR-71	71888-12	SILICON	RCA
SR-72	71888-12	SILICON	RCA
SR-73	71888-12	SILICON	RCA
SR-74	71888-12	SILICON	RCA
SR-75	71888-12	SILICON	RCA
SR-76	71888-12	SILICON	RCA
SR-77	71888-12	SILICON	RCA
SR-78	71888-12	SILICON	RCA
SR-79	71888-12	SILICON	RCA
SR-80	71888-12	SILICON	RCA
SR-81	71888-12	SILICON	RCA
SR-82	71888-12	SILICON	RCA
SR-83	71888-12	SILICON	RCA
SR-84	71888-12	SILICON	RCA
SR-85	71888-12	SILICON	RCA
SR-86	71888-12	SILICON	RCA
SR-87	71888-12	SILICON	RCA
SR-88	71888-12	SILICON	RCA
SR-89	71888-12	SILICON	RCA
SR-90	71888-12	SILICON	RCA
SR-91	71888-12	SILICON	RCA
SR-92	71888-12	SILICON	RCA
SR-93	71888-12	SILICON	RCA
SR-94	71888-12	SILICON	RCA
SR-95	71888-12	SILICON	RCA
SR-96	71888-12	SILICON	RCA
SR-97	71888-12	SILICON	RCA
SR-98	71888-12	SILICON	RCA
SR-99	71888-12	SILICON	RCA
SR-100	71888-12	SILICON	RCA

VOLTAGES INDICATED ON SCHEMATIC ARE D.C.  
A.C. VOLTAGES MEASURED FROM GROUND  
LINE VOLTAGE 117 V  
D.C. MEASURED WITH VTVM

## NOTE:

ALL SWITCHES ARE SHOWN IN  
MECHANICAL "AT REST" POSITION

THIS SCHEMATIC IS SHOWN  
IN THE LATEST CONDITION  
AT THE TIME OF PRINTING

122268